

SALACOA VALLEY FARMS • SPITZER RANCH
SVF ALLIANCE

• Two Operations with 52 Years in Business for the Professional Cattleman •
• Performance Genetics BUILT, not BOUGHT •

FALL 2009 NEWSLETTER

SALACOA VALLEY FARMS 2009 BULL SALE REPORT

If you weren't with us September 26, we missed you; and you missed a firsthand observation of the strong demand for the kind of Brangus Bulls produced by the folks at Salacoa Valley Farms. Commercial producers from across the southeast bid on a really stout set of Performance Tested Bulls and ran the average on the 79 bulls selling to \$2,279.

Headlining the sale was SVF Bolivar 23 U300, A PR Elixir 698L3 son out of the premier donor dam, SVF Ms 23M28. Bidding was intense and furious, especially keeping the telephone lines buzzing. When the auctioneer stopped to catch his breath U300 was owned by Jackie and Kelly Grissom's 8G Brangus, Breckenridge, TX at \$11,500 for ½ interest and full possession.

Clover Ranch, Lineville, AL owned by the Medina Brothers and Oskar Juarez, took home the second high selling bull with a bid of \$4,000 for ½ interest and full possession on SVF Garrett 274 U229. A popular calf with the audience, this Garrett of Brinks 789P son was an ET calf out of the former donor at SVF, Miss JLS Revenue 274N6.

Salacoa Valley Farms is always

enthused at the acceptance of our profit minded genetics with the programs of the very serious minded professional commercial ranchers and cattlemen. The balance of the bulls sold to a host of repeat customers from AL, GA, FL, LA, NC, TN and TX. In fact, 46 bulls found homes with six volume buyers from FL and LA alone.

Of special note to us is that long time friend, supporter and customer, Gene Fulford of KICCO Ranch, Okeechobee, FL was honored as the Salacoa Valley Farms Commercial Customer of the year for 2009.

SPITZER RANCH BULL SALE FEBRUARY 27, 2010

Seems like we just finish one sale; and then begin to commit all our energies to the next. Please check pages 6, 7 and 8 of this newsletter for current performance information on the 101 bulls on our current performance growth tests. These bulls will be the most uniform, profit oriented bulls to sell anywhere in the country. Our goal when we formed the Salacoa Valley Farms-Spitzer Ranch Alliance was to provide a wider opportunity for our customers to purchase bulls at both a fall and a spring sale. Please mark your calendars, we promise you won't want to miss this opportunity to purchase curve bender genetics in volume.

Points to ponder

These gems come from the book Growing Up Cowboy by Jack Sorenson. If you have a son or grandson under about 10 or so, you absolutely must get the book as a gift to benefit them for life!

“A boy has two jobs. One is just being a boy. The other is growing up to be a man.”

---Herbert Hoover

“A fairly bright boy is far more intelligent and far better company than the average adult.”

---John B. S. Haldane

“There's nothing that can help you understand your beliefs more than trying to explain them to an inquisitive child.”

---Frank A. Clark

“If parents want honest children, they should be honest themselves.”

---Robert G. Ingersoll

“There are no seven wonders of the world in the eyes of a child. There are seven million.”

---Walt Streightiff

“Boys learn from their mistakes and gain confidence in their achievements.”

---Jack Sorenson

OUR LEGACY: the Land, the Family, the Cattle (NCBA)

SALACOA VALLEY FARMS BEN SPITZER NOMINATED AS CANDIDATE FOR IBBA BOARD OF DIRECTORS

The following will appear in the NOV/DEC issue of the Brangus Journal when candidates for all IBBA Board of Director Positions are announced. We are proud of Ben and wanted to give those of you who get the SVF-SR ALLIANCE Newsletter a sneak preview.

Benjamin James Spitzer was born July 22, 1980 in Bryan Texas, moved as an infant with his family and was raised in the Upstate of South Carolina. It is no wonder Ben has a passion for the beef industry. He grew up in the cattle business and very early in life made a conscious decision that animal agriculture would be his life's work. His family involvement goes back several generations and has included both commercial cattle and registered cattle of several breeds.

Ben's family purchased their first registered Brangus cattle in 1982. Ben and his two older brothers were very involved on a County, State and Regional basis with 4-H and FFA; showing their home raised Brangus cattle and cross-bred lambs with much success. Spitzer's first involvement with Brangus was through the International Junior Brangus Breeder's Association when he exhibited cattle at the Southeast Junior Brangus Show in Perry, GA in 1990. From then on, he was hooked and exhibited cattle and participated in almost every available contest event at the National Junior Brangus Show (NJBS) beginning in 1992 in Perry, GA until 1999 at Enid, OK, missing the NJBS only one year during that time. Ben was also elected as Vice-President and then President of the

South Carolina Junior Cattlemen's Association. Through his active involvement with IJBBA, Ben was the recipient of the Southeast Brangus Breeders Association (SBBA) scholarship as well as the International Brangus Auxiliary (IBA) Underclassman Scholarship. All during this time he was an active part of his family's Brangus operation and helped with day to day management and genetic selection.

Ben attended Oklahoma State University (OSU) on an academic scholarship and majored in Animal Science with an animal production emphasis. While at OSU, Ben was selected to the OSU President's Leadership Council and to the prestigious Oklahoma Agriculture Leadership Experience. He was actively involved with a variety of club activities, was elected President of Cowboys for Christ for two terms and served on AG Council. He worked a variety of jobs and was able to help care for animals and assist with several research projects as an employee at the Animal Science Department's Nutrition and Physiology Center. Upon graduation from OSU in 2004, Ben headed West to continue his formal education at Colorado State University; obtaining his Master's Degree in Integrated Resource Management.

As part of his Master's Program, Spitzer interned with the Red Angus Association of America (RAAA) in Denton, TX. He was involved with several projects, including a strong emphasis in commercial marketing. Upon finishing his program at CSU, he accepted the position of Communications/Member Services Director at RAAA where he was employed for almost two years. In this position, he represented the Red Angus Association at national, state and regional meetings, field days, and sales, as well as industry events

across the country. He assisted with several aspects of breed promotion, including design and placement of advertising material and attendance at conventions and trade shows. He also performed compliance audits of commercial cow-calf operations, stockyards and feedlots to ensure strict adherence to RAAA's USDA verified Genetic, Source and Age verified feeder calf program.

A unique opportunity enabled Ben to come back to an active role in the Brangus breed as General Manager of Salacoa Valley Farms, Fairmount, GA in July of 2007. In this position, he is totally responsible for all aspects of the operation with a focus on genetic selection and sales. Since he accepted this position, he has focused on producing genetics designed for profitable commercial beef production. He has been actively involved with the IBBA attending multiple functions both locally and nationally as well as serving on the Commercial Marketing committee and as Vice-Chairman of the Promotions committee for IBBA. He is also very active in the National Cattlemen's Beef Association (NCBA) as well as being a founding member of the NCBA Young Producer's Council (YPC), serving as the chair of the YPC Membership Committee and representing YPC on the NCBA Membership committee.

Ben strongly feels the IBBA has made great strides to position the Brangus breed, and especially those professional commercial cattlemen using Brangus Genetics, to be major players in the future beef industry. He states that IBBA is fast gaining a reputation as leaders on the cutting edge and we cannot let up. Ben Spitzer has worked hard and has packed a lot of experience as a professional cattleman into his budding career. He looks forward

to serving the IBBA membership as Director for Area 11.

He brings a wealth of cattle knowledge, extreme enthusiasm, a true love of the breed, and contacts to continue to grow demand for the Brangus breed and promote its usefulness to the industry both nationally and abroad. Ben grew up in the Southeast, knows the people and, if elected, will represent all breeders in his role as a Director. He will bring new ideas and an unwavering commitment to continue to build on the groundwork and success of the breed in the last several years. If you are an International Brangus Breeders Association Active Member, Ben asks for your vote to represent Area 11 (The Eastern Time Zone) on the IBBA Board of Directors.

BEEF CATTLE PRODUCTION CROSSBREEDING SYSTEMS

As selection for carcass quality has taken center stage in the beef cattle industry, too many producers have decreased the use of crossbreeding in their commercial herds – much to their detriment in profitability. Crossbreeding leads to increased performance; PERIOD! And it just may be the only management tool that increases overall productivity and improves the bottom line in the bank account with little or no added costs or inputs.

Crossbreeding works as a result of heterosis, also known as hybrid vigor. The scientific definition of heterosis is the amount by which a crossbred animal exceeds (is better than) the average performance of the purebred parents used in the cross. However, it should be obvious that performance of the crossbred must be better than performance of the “best” parent to be of any value to commercial beef production. With a systematic, planned, logical system that uses

both heterosis (crossbreeding) and selection, it always does. This idea may be helped by an example and we will use weaning weight (WW) where this particular crossbred exhibits about 12.5% heterosis:

Hereford Average WW = 550#
Brangus Average WW = 600#
Average of purebred parents =
(550# + 600#)/2 or 575# WW

½ Brangus and ½ Hereford Calf
Average = 645# WW

Heterosis for WW would be
645# - 575# = 70 # increase and
Percent Heterosis for WW here
is 70#/575# = 12.2%

Heterosis is expressed in almost all production traits, but especially so in reproduction, longevity, adaptability and, maybe the most important, “convenience traits”. Very significant improvements in reproduction and maternal traits can be made through systems that maximize heterosis.

Critical to our understanding is the fact that rapid and significant progress can also be made through selection for carcass traits, while crossbreeding has very little or no effect. Fortunately for us, all of the growth traits, such as weaning and yearling weights, exhibit moderate levels of heterosis and also respond somewhat moderately to selection.

Having a Planned Crossbreeding System is kind of like “having your cake and eating it too”. Heterosis improves those traits that selection does not with no adverse effects, while selection still works to improve those traits that are highly heritable. Yes, selection works even in crossbred cows and anyone who says differently is either extremely uninformed or is being deliberately misleading.

Armed with this information, professional commercial beef producers can tailor a program to fit their individual needs. All should

be concerned with improving carcass traits and selection is the way to increase carcass quality and yield. However, if reproductive rates, longevity or convenience traits are important, crossbreeding is the easiest, cheapest, quickest and best way to improvement.

Producers must use breeds that complement each other. Brangus crossed with cattle of the British breeds (Hereford, Angus, Red Angus etc.) are terrific examples of breeds that complement each other and form a foundation for a logical crossbreeding system. There is excellent data from the Meat Animal Research Center, Clay Center, NE which says using one of the “Zebu” breeds (obviously we believe the most correct Zebu breed to be Brangus) will result in a doubling of heterosis over crossbreeding systems using only the British and Continental breeds.

We have many customers in the southeast with a very simple two-breed crossbreeding system using Brangus and either Hereford or Angus as the second breed. They reap the rewards of increased heterosis, but they also put intensive selection pressure on the bulls they buy in both breeds, oftentimes competing with registered breeders for the top of the sale order at any bull sale they attend. Several of our customers have agreed to be resource people for us and if you wish to visit with them about how using Salacoa Valley Farms or Spitzer Ranch Brangus bulls in their planned crossbreeding system has made them more profitable; please give us a call.

Always remember that quality, performance tested cattle must be selected in order to reap all the rewards of crossbreeding and produce the type of product that is in demand by the beef consuming public. Crossbreeding will not overcome poor genetics in any trait!

GREETINGS, WHAT'S UP WITH "SALLY VALLEY"

Years ago when we were trying to go broke pulling a string of show cattle over the country, we had an older fellow named Eddie, who traveled with the show string. Eddie had a speech impediment and could not say "Salacoa", so he called our farm "Sally Valley". Though most people in the show barn thought Eddie had ridden the short bus to school (if he had gone to school at all), everyone liked Eddie and Eddie loved people. As soon as the cattle were in their place in the show barn, fed and watered, Eddie would go throughout the barn, giving to everyone a small bag of roasted peanuts and saying, "Greetings from Sally Valley, what's up with Spitzer Ranch?" or whatever ranch was represented by whomever he was talking to. After several years of this, people would greet us with "Greetings, what's up with Sally Valley?"

For this newsletter, my job is to tell you "What's up with Sally Valley?" We have been blessed with rain and green grass in 2009. We wish we could share the rain with some of you who are experiencing what we went through two or three years ago. Susan and I have just finished driving through most of our cattle – our regular Saturday routine. They really looked good and we had a lot of fun attempting to identify the calves' sires before we were close enough to read the tag. Most of our cows are AI bred, but Ben is continuing to increase the use of bulls of which we have an ownership position in and possession. He continues to use enough outside semen to give us a comparison to the "hot" bulls in the industry.

We could not be more impressed with how our bulls stack up against the outside bulls. Calves from bulls

like "TCB Catawba Warrior R532", "DDD UC-Gentleman 804S21", "PR Elixir 698L3" and "SVF Mr. Cadence 23S86" really make us proud

When John Maurer, our sales manager, last visited, he chastised me for the turnover in our employment roster. We had recently hired Chad Miller as foreman. Chad has spent most of his life in the west; he obtained his education in Texas and he worked for a number of ranches in the west before coming to us. Chad seems to be acclimatizing well to the southeast and we think you will enjoy meeting and working with him in the coming years. Our former foreman, Tim Caudill, accepted a position with one of the large horse operations in the state. Tim is a good cow man and an excellent horse person. We wish Tim and his family the best in their new endeavor.

As some of you know, Todd Edwards was hurt last June. He is making excellent progress and wants me to express his appreciation to everyone who has offered their best wishes for his recovery. He especially wishes to thank Janet Greuel, Susan Hall and Susan Burke, who used their medical expertise at the time of the injury. Todd does a lot of things well on a cattle operation however he is an expert when it comes to artificially inseminating cows. Todd assures me that he will be ready to go when our breeding season gets here.

The most exciting thing that has happened is Willard Huffman has agreed to sell us his "Three Creeks Brangus" herd. We look forward to work with all of the cows but are extremely excited about "SR Warrior Princess N332. N332 is a Summit cow and has had five calves – two females that we own and who could easily be better than

their dam. Two of her three bull calves are now herd sires in our program and her other bull calf is a herd sire in a friend's program. We have owned the two herd sires for some time now and have numerous calves on the ground by both of them. We think that they are outstanding. We believe that N332 will take her place alongside the great cows of the Brangus breed. Cows like Vineyard's "The Sisters", Billy Harry's "That 31 cow", Brinks' "Miss Independence" and Salacoa Valley's "23 cow". To give you an idea as to what this cow is producing, look at the numbers on one of her bull calves who is a herd sire in our operation. TCB Catawba Warrior R532 has now sired 79 calves and his EPD's read:

BW = -0.2 Top 35% of breed

WW = 48 Top 1% of breed

YW = 85 Top 1% of breed

MK = 18 Top 5% of breed

TM = 42 Top 1% of breed

SC = 0.9 Top 20% of breed

REA = 0.72 Top 10% of breed

IMF = 0.2 Top 45% of breed

Along with these numbers, he is phenotypically outstanding. His siblings are very similar in appearance and numbers. His progeny appear to be even better.

What's up at Sally Valley? Things could only better if I won the lottery or if Susan would let up!!

AGRICULTURE IS AMERICA'S SOUL!

SALACOA VALLEY FARMS-SPITZER RANCH ALLIANCE PROGRAM TEST 2009-1

140-Day Report ~ October 2, 2009

TEST TAG	ID Number	Sire	EPDs										Birth			Adj 205 Weaning			On Test			140-Days						Adj 365-Day Yearling			
			BW	WW	YW	MK	TM	SC	REA	%IMF	FAT	Date	WT	WT	WT	Ratio	NC	WT	WT	WT	Age	WT	ADG	Ratio	WDA	Ratio	SC	FS	WT	Ratio	NC
9139	U677	SVF Mr. 4456	-0.7	27	54	18	31	0.2	0.37	-0.020	-0.003	11/27/08	76	576	103	28	478	309	858	2.71	99	2.78	100								
9140	U688	SR Eureka Warrior S614	-2.5	10	27	11	16	0.2	0.08	0.010	-0.002	11/30/08	70	534	97	24	436	306	780	2.46	89	2.55	92								
9141	U694	TCB Catawba Warrior R532	1.0	34	58	16	33	0.5	0.40	-0.040	0.004	12/03/08	100	601	108	28	498	303	922	3.03	110	3.04	110								
9142	U697	TCB Catawba Warrior R532	0.1	35	60	14	31	0.8	0.56	0.080	-0.001	12/04/08	84	635	114	28	512	302	937	3.04	111	3.10	112								
9143	U698	SR Eureka Warrior S614	-3.0	12	29	11	17	0.1	0.09	0.010	-0.002	12/04/08	66	565	102	24	449	302	758	2.21	80	2.51	90								
9147	U510	Cadence of Brinks 535D3	-3.0	21	44	18	29	0.4	0.56	0.120	0.001	09/19/08	58	496	94	10	518	378	858	2.43	88	2.27	82								
9148	U516	Cadence of Brinks 535D3	-1.4	26	50	20	33	0.4	0.53	0.110	-0.002	09/26/08	68	527	100	10	526	371	850	2.31	84	2.29	82								
9149	U519	Uppercut of Brinks 14J8	-1.1	20	44	2	11	1.2	0.41	0.110	-0.009	09/27/08	68	518	98	10	514	370	936	3.01	110	2.53	91								
9150	U529	Cadence of Brinks 535D3	-1.4	25	49	22	35	0.1	0.52	0.030	-0.005	10/06/08	76	527	100	1	562	361	968	2.90	106	2.68	97								
9151	U531	PR Elixir 698L3	0.6	28	52	8	22	0.4	0.24	0.050	0.004	10/06/08	90	572	101	22	610	361	904	2.10	76	2.50	90								
9152	U533	SVF Mr. Cadence 23S86	-1.4	38	52	20	35	0.5	NA	NA	NA	10/06/08	74	585	111	10	570	361	988	2.99	109	2.74	99								
#9153	U537	N Bar Prime Time D806	0.4	39	78	23	43	0.5	0.12	NA	NA	10/07/08	62	543	100	1	578	360	906	2.34	85	2.52	91								
9154	U539	SVF Mr. Cadence 23S86	-1.4	32	52	14	30	0.6	NA	NA	NA	10/08/08	80	565	107	10	542	359	930	2.77	101	2.59	93								
9155	U547	Cadence of Brinks 535D3	-0.8	32	54	14	29	0.6	0.44	0.030	-0.005	10/09/08	78	544	96	22	574	358	942	2.63	96	2.63	95								
9156	U586	PR Elixir 698L3	0.6	38	61	6	25	0.6	0.27	0.110	0.007	10/15/08	98	641	113	22	660	352	1055	2.82	103	3.00	108								
9157	U587	Cadence of Brinks 535D3	0.0	25	40	21	34	0.1	0.38	0.050	-0.002	10/15/08	90	546	96	22	562	352	908	2.47	90	2.58	93								
9158	U621	Cadence of Brinks 535D3	-1.1	26	46	12	25	0.4	0.35	0.060	-0.002	11/01/08	82	538	95	22	512	335	932	3.00	109	2.78	100								
9159	U635	PR Elixir 698L3	-0.9	31	50	0	15	0.5	0.09	0.090	0.005	11/07/08	74	612	108	22	562	329	898	2.40	87	2.73	98								
9160	U645	Brinks Lead Gun 488R	-3.1	13	33	10	16	0.5	0.19	0.000	-0.008	11/12/08	66	563	99	22	512	324	868	2.54	93	2.68	96								
9161	U656	TCB Catawba Warrior R532	0.9	42	71	19	40	0.6	0.39	-0.020	0.001	11/20/08	94	660	116	22	580	316	860	2.00	73	2.72	98								
9162	U663	PR Elixir 698L3	0.7	33	56	9	25	0.3	0.25	0.170	0.007	11/23/08	80	627	111	22	534	313	908	2.67	97	2.90	104								
9163	U668	PR Elixir 698L3	-1.4	27	46	8	22	0.6	0.16	0.110	0.008	11/23/08	70	573	101	22	488	313	886	2.84	104	2.83	102								
9164	U673	TCB Catawba Warrior R532	-0.7	28	54	16	30		0.56	0.120	-0.003	11/27/08	72	615	108	22	520	309	894	2.67	97	2.89	104								
9165	U679	PR Elixir 698L3	-0.1	23	41	10	22	0.5	0.28	0.090	0.006	11/27/08	80	569	100	22	483	309	864	2.72	99	2.80	101								
9166	U681	TCB Catawba Warrior R532	1.1	44	74	10	32	0.7	0.67	0.030	0.002	11/28/08	80	688	100	1	562	308	852	2.07	75	2.77	100								
9167	U683	PR Elixir 698L3	1.5	39	62	9	29	0.9	0.06	0.040	0.006	11/29/08	96	651	115	22	548	307	972	3.03	110	3.17	114								
9168	U684	PR Elixir 698L3	0.9	32	54	10	26	0.5	0.28	0.230	0.006	11/29/08	86	537	102	10	453	307	882	3.06	112	2.87	103								
9169	U685	Brinks Lead Gun 488R	-1.3	15	30	5	12	0.7	0.41	-0.010	-0.002	11/30/08	78	542	96	22	454	306	764	2.21	81	2.50	90								
9170	U689	SR Tatanka Warrior P425	-1.0	17	41	13	22	0.4	0.50	-0.010	-0.002	11/30/08	80	587	103	22	488	306	950	3.30	120	3.10	112								
9171	U690	PR Elixir 698L3	0.8	29	48	11	26	0.4	0.26	0.160	0.007	11/30/08	82	549	104	10	448	306	754	2.19	80	2.46	89								
9172	U701	Brinks Lead Gun 488R	-0.2	19	39	4	14	0.5	0.43	0.060	-0.005	12/04/08	100	552	105	10	457	302	856	2.85	104	2.83	102								
69 Total Bulls			-0.6	25	45	11	24	0.4	0.29	0.057	0.001		80	579	104		555	339	940	2.75	100	2.78	100	####	####	####	####	####	####	####	

NOTE: Bull with # before Test Tag is a Registered Angus Bull.
 NOTE: Bulls with * before Test Tag are Unregisterable Brangus Bulls.
 NOTE: Bulls 9106 (U552), 9118 (U579) and 9124 (U603) are Red Brangus Bulls.

SALACOA VALLEY FARMS-SPITZER RANCH ALLIANCE PROGRAM TEST 2009-2

88-Day Report ~ September 22, 2009

TEST TAG	ID Number	Sire	EPDs										Birth		Adj 205 Weaning			On Test		88-Days					Adj 365-Day Yearling			
			BW	WW	YW	MK	TM	SC	REA	%IMF	FAT	Date	WT	WT	Ratio	WT	WT	NC	Age	WT	ADG	Ratio	WDA	Ratio	SC	FS	WT	Ratio
9201	U350	SR Cadence Warrior S702	-0.3	24	44	13	25	0.4	0.23	-0.030	-0.004	10/13/08	76	597	100	1	701	344	1005	3.45	119	2.92	99					
9202	U351	Uppercut of Brinks 14J8	-1.6	17	36	9	18	1.3	0.19	-0.150	-0.003	10/29/08	74	588	100	1	612	328	890	3.16	109	2.71	92					
9203	U357	Uppercut of Brinks 14J8	-0.2	24	46	8	20	1.3	0.25	-0.130	-0.001	11/11/08	80	588	98	10	584	315	838	2.89	99	2.66	90					
9204	U362	Uppercut of Brinks 14J8	0.7	26	50	12	25	1.3	0.32	-0.100	-0.001	11/16/08	94	685	110	12	734	310	992	2.93	101	3.20	109					
9205	U363	Aces TF Wrangler 145I8	0.1	25	50	16	29	0.5	0.35	-0.110	0.007	11/19/08	84	666	107	12	670	307	924	2.89	99	3.01	102					
9206	U364	Uppercut of Brinks 14J8	-1.0	20	39	8	18	1.2	0.24	-0.140	-0.003	11/20/08	86	590	95	12	622	306	864	2.75	95	2.82	96					
9207	U367	SR Cadence Warrior R568	-2.4	24	45	20	32	0.3	0.41	-0.070	-0.008	11/21/08	66	674	113	10	654	305	952	3.39	116	3.12	106					
9208	U368	Uppercut of Brinks 14J8	0.7	25	50	9	22	1.3	0.28	-0.090	-0.005	11/23/08	90	647	104	12	642	303	878	2.68	92	2.90	98					
9209	U370	Cadence of Brinks 535D3	-0.9	24	42	20	32	0.6	0.33	-0.050	-0.004	11/24/08	82	616	99	12	638	302	902	3.00	103	2.99	101					
9210	U375	Uppercut of Brinks 14J8	1.3	26	50	6	19	1.3	0.26	-0.110	-0.002	11/28/08	96	620	100	12	600	298	950	3.98	137	3.19	108					
9211	U377	SR Cadence Warrior R568	-1.8	28	49	17	30	0.3	0.42	-0.040	-0.008	12/03/08	70	667	112	10	614	293	890	3.14	108	3.04	103					
9212	U379	SR Cadence Warrior R568	-1.9	25	50	15	28	0.4	0.36	-0.030	-0.005	12/06/08	64	654	105	12	616	290	850	2.66	91	2.93	99					
9213	U380	SR Tatanka Warrior P425	-1.4	18	36	20	29	0.4	0.44	-0.030	-0.001	12/09/08	84	661	106	12	644	287	892	2.82	97	3.11	105					
9214	U381	SR Cadence Warrior R568	-0.3	30	55	11	26	0.3	0.48	-0.020	-0.005	12/11/08	74	601	101	10	530	285	826	3.36	116	2.90	98					
9215	U382	SR Cadence Warrior R568	-0.9	29	55	11	26	0.4	0.40	-0.010	-0.002	12/11/08	62	604	101	10	534	285	816	3.20	110	2.86	97					
9216	U386	SR Cadence Warrior R568	-3.1	24	47	17	29	0.4	0.47	-0.010	-0.008	12/17/08	56	597	100	10	512	279	730	2.48	85	2.62	89					
9217	U387	SR Cadence Warrior R568	0.2	32	58	13	29	0.3	0.47	-0.040	-0.001	12/18/08	82	625	105	10	538	278	818	3.18	109	2.94	100					
9218	U388	SR Cadence Warrior R568	0.1	34	57	15	32	0.5	0.46	-0.020	-0.010	12/20/08	76	642	108	10	548	276	760	2.41	83	2.75	93					
9219	U402	Aces TF Wrangler 145I8	-0.4	29	49	18	33	0.7	0.26	0.050	0.005	11/18/08	92	765	106	3	814	308	984	1.93	66	3.19	108					
9220	U406	Uppercut of Brinks 14J8	-1.9	25	49	13	25	0.5	0.40	0.090	0.003	12/20/08	92	694	97	3	644	276	878	2.66	91	3.18	108					
9221	U407	SR Cadence Warrior H823	-2.2	17	40	8	17	1.3	0.25	-0.090	-0.003	12/25/08	83	698	97	3	624	271	792	1.91	66	2.92	99					
9222	U441	SR Cadence Warrior P456	0.2	32	62	16	32	0.5	0.42	-0.050	-0.005	11/24/08	83	613	98	5	632	302	884	2.86	98	2.93	99					
9223	U446	SR Cadence Warrior P456	0.0	32	61	16	32	0.5	0.44	-0.040	-0.004	11/30/08	75	663	106	5	660	296	930	3.07	106	3.14	107					
9224	U448	SR Cadence Warrior P456	0.6	35	63	18	36	0.5	0.49	-0.020	0.002	12/18/08	75	615	98	5	568	278	784	2.45	84	2.82	96					
9225	U883	SR Cadence Warrior P456	0.4	28	54	21	35	0.5	0.37	-0.009	-0.003	12/05/08	78	672	107	5	656	291	904	2.82	97	3.11	105					
9226	U709	Brinks Lead Gun 488R	-2.9	18	40	13	22	0.5	0.52	0.040	0.000	12/11/08	74	605	110	10	576	285	806	2.61	90	2.83	96					
9227	U711	PR ELIXIR 698L3	1.0	36	57	6	24	0.3	0.27	0.000	0.005	12/12/08	92	598	109	10	576	284	888	3.55	122	3.13	106					
9228	U714	SR Tatanka Warrior P425	-0.7	30	44	4	19	0.3	0.56	0.100	-0.004	12/15/08	78	628	115	10	572	281	854	3.20	110	3.04	103					
9229	U715	Brinks Lead Gun 488R	-1.0	18	42	7	15	0.5	0.32	-0.020	-0.004	12/15/08	80	622	114	10	590	281	874	3.23	111	3.11	105					
9230	U718	SR Tatanka Warrior P425	-0.4	14	36	16	23	0.5	0.52	-0.010	-0.002	12/21/08	86	568	103	10	520	275	762	2.75	95	2.77	94					
9231	U719	PR ELIXIR 698L3	-0.1	28	52	6	20	0.5	0.28	0.100	0.005	12/23/08	84	578	106	10	530	273	780	2.84	98	2.86	97					
9232	U721	PR ELIXIR 698L3	-1.2	24	43	11	23	0.7	0.05	0.100	0.009	12/24/08	78	536	98	10	482	272	728	2.80	96	2.68	91					
	32	Total Bulls	-0.7	26	48	13	26	0.6	0.36	0.034	-0.002		80	631	104		607	293	863	2.91	100	2.95	100	####	####	####	####	####

MARK YOUR CALENDARS! Bulls on SVF-SR ALLIANCE Program Test 2009-1 and Test 2009-2 will sell in Spitzer Ranch Performance Tested Bull Sale on Saturday February 25, 2010

THE LONE RANGER CREED

I believe that to have a friend, a man must be one.

That all men are created equal and that everyone has within himself the power to make this a better world.

That God put the firewood there, but that every man must gather and light it himself.

In being prepared physically, mentally, and morally to fight when necessary for that which is right.

That a man should make the most of what equipment he has.

That "this government of the people, by the people, and for the people" shall live always.

That men should live by the rule of what is best for the greatest number.

That sooner or later..somewhere, somehow..we must settle with the world and make payment for what we have taken.

That all things change, but the truth, and the truth alone lives on forever.

I believe in my Creator, my country and my fellow man.

SPITZER FAMILY NEWS

At the Awards Banquet for the Brangus Breeders 2009 Annual Convention in Houston, Ben and I found ourselves sitting at a table with several good friends. I vividly remember Lee Alford, TX and Vern Suhn, KS along with several others whose faces are now fuzzy. Our entertainment for the night was Pat Gavin and the Buckaroo Band who do a bang-up job with all the old cowboy and western songs and tunes from long ago.

Now, we were sitting directly in front, no more than six feet from the band. Lee Alford could just not sit still. His feet were tapping; he was swaying and just really getting with it. If my memory is correct there were even a few cowboy yips and yahoos filling the air. We were all

having a grand time but no one more so than Lee and after a while, I was having as much fun watching Lee as listening to the band.

After getting back home I ordered a Buckaroo Band tape from their WEB Site. Also on that site were all those "Codes of the West" we grew up with watching Gene Autry, Roy Rogers, Hoppy and others on our mostly black and white TV sets. In our last edition I shared one with you and will continue to do so until I exhaust the supply. Probably if you are not close to 50, you will not appreciate them as much as some of us with a little more gray in what hair we have left. Cowboy up, you're going to get them anyway!

Since we last visited with you, we have been "on the road again" with a trip to PA to visit my mother. She is now in an assisted living facility and fighting Alzheimer's disease, but still pretty well takes care of herself and her small apartment. As many of you know, early stage Alzheimer's seem to rob immediate memory, but enhance memories of the past.

My mother was a soldier in the British Army from 1939 to 1945 and those memories now seem vivid to her. In fact we have recently learned she was one of the first 12 women drafted into the ACKS ACKS which were supposed to be radar operators. Investigation by my sister turned up that the 12 were Decorated Soldiers "Successfully defending one of the last major German Air Attacks against London, initially providing gunners with radar information and, in the end, manning the gunner equipment themselves". We are losing more of our WWII veterans every day. Many of them have such stories that need to be shared and we all need to thank them for truly saving the world and building the prosperity we now enjoy. My mother turned

90 on the last day of August.

While we are on mothers, Patricia's mother also turned 90, July 21. She was a farm raised girl from Nebraska who married young and raised 6 children. None of the others are quite as wonderful and delightful as Patricia, but all pretty successful in their own right. She stayed in Ft. Collins, CO with 4 young children while Tricia's dad went to Cheyenne, WY to build the big Bombers. Incidentally, those Bombers were the ones my father flew serving as a Bombardier while stationed in England in the Army Air Corps (now the Air Force).

Patricia's mother is amazingly spry for 90 and still maintains her three bedroom house. She has always been such a fastidious housekeeper that we had a family joke that if there happened to be a speck of dust in that house; it would be perfectly situated and oriented north to south. Be assured – nothing's changed.

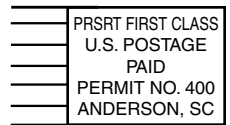
Here at Spitzer Ranch, we have had a hit-or-miss year as far as rain, but still managed to put up a barn full of hay. Good fortune smiled on us as we "dusted in" rye/ryegrass SEP 5th and then had a good soaking rain SEP 9th. Unless we have to fight fall army worms we should have grazing by NLT NOV 1. We need every bit of it as we have way too many cows on this place after losing a piece of leased pasture.

Fall always seems to Tricia and me as a time to get back into the rhythm of life. School is back in session for our grandkids. We are beginning to have nighttime temperatures in the 60s and there is even a hint of color in leaves of hardwood trees. Come November we will begin calving, which just may be the absolute grandest time of year for ranchers. We'll leave you with this, "Life is too short; ride your best horse first!"

SALACOA VALLEY FARMS • SPITZER RANCH
SF ALLIANCE

• Two Operations with 52 Years in Business for the Professional Cattleman •
• Performance Genetics BUILT, not BOUGHT •

1511 HWY 59
Fair Play, SC 29643
RETURN SERVICE REQUESTED



SPITZER RANCH

Performance Tested Brangus Bull Sale
AND
Brangus Gold Commercial Female Sale

Saturday, February 27, 2010 at 1:00 PM
Calhoun Stockyards Sale Facility
Calhoun, GA

Exit West off I-75N at Exit 312, Go West on GA HWY 53 for 5.8 miles (Barn on Left)